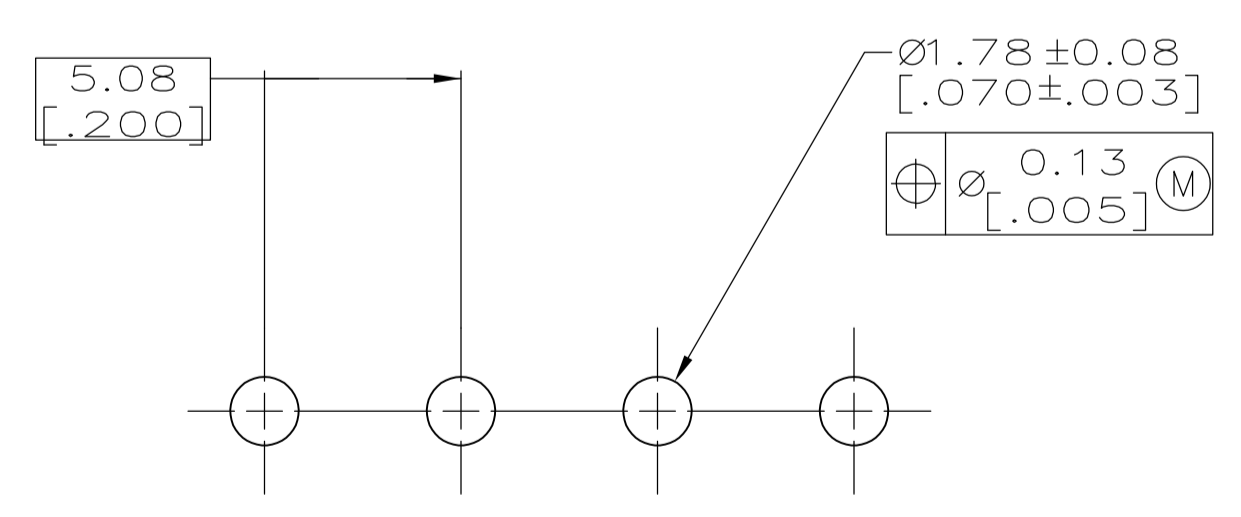
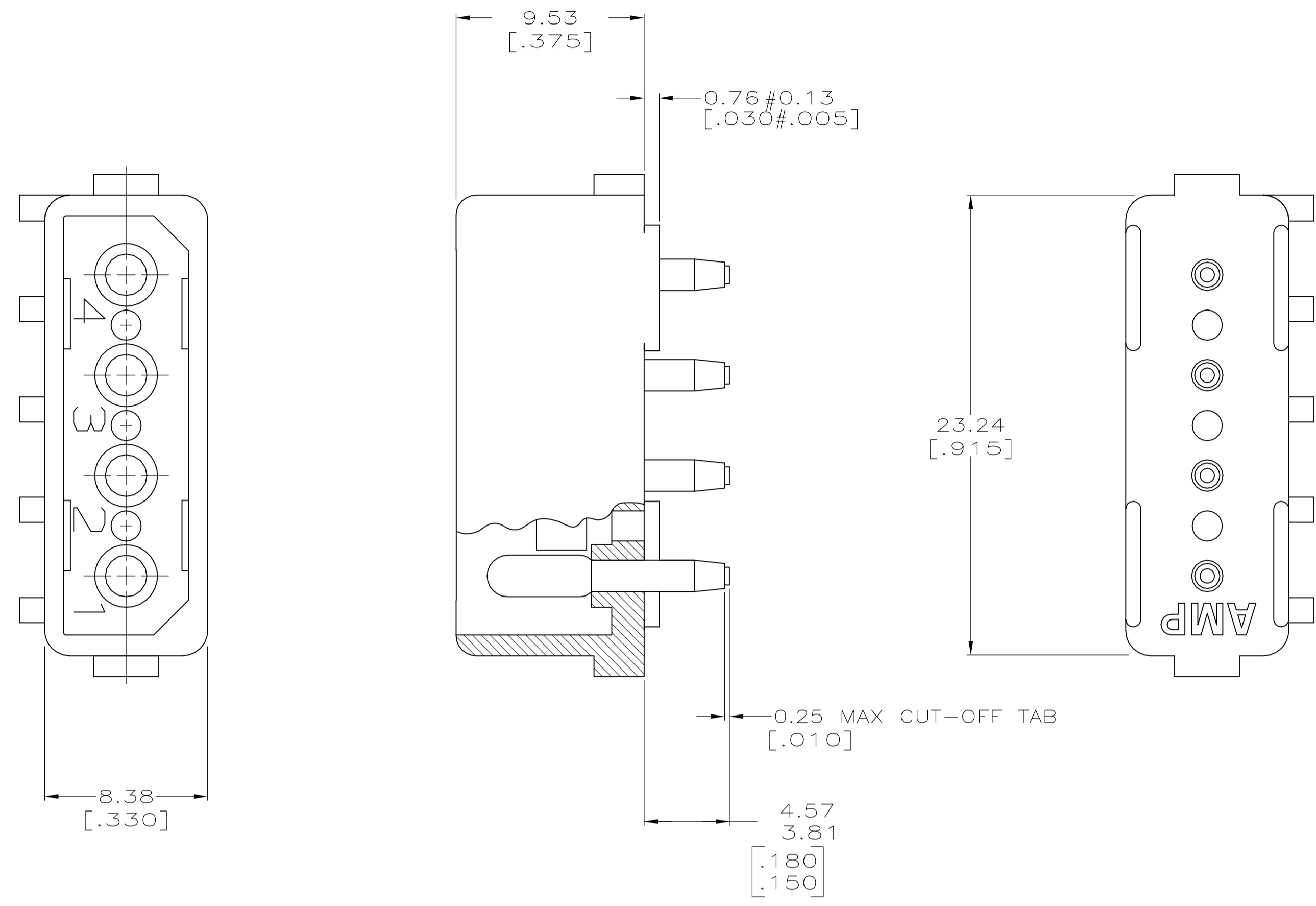
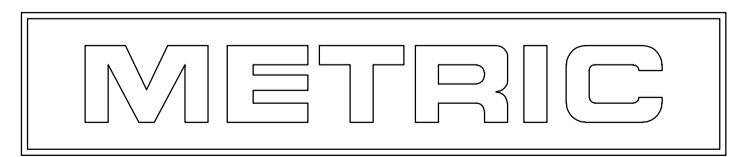


1 PARTS COMPLY WITH AMP SOLDERABILITY SPEC. 109-11-3.
 3 MATERIAL: HOUSING - NYLON,UL94V-2,NATURAL
 PIN - COPPER ALLOY,BRIGHT TIN
 PLATED,0.0020 [.000080] MIN.THK.



RECOMMENDED MOUNTING HOLE PATTERN
 FOR 1.57 [.062] THICK P.C. BOARD



—	—	4	1586627-1
HEADER ASSY	PLUG	NO. OF POSITIONS	PART NUMBER
QTY PER TUBE		HEADER ASSEMBLY	

THIS DRAWING IS A CONTROLLED DOCUMENT.		DWG K. WHITAKER	24JUNE2005	Tyco Electronics Corporation Harrisburg, PA 17105-3608	
DIMENSIONS: mm [INCHES]		CHK D. COLEY	24JUNE2005	NAME HEADER ASSY, 4 CKT, COMMERCIAL MATE-N-LOK(TM)	
TOLERANCES UNLESS OTHERWISE SPECIFIED:		APP'D D. COLEY	24JUNE2005	PRODUCT SPEC	
0. PLC	± —	APPLICATION SPEC		RESTRICTED TO	
1. PLC	± —	—		—	
2. PLC	± —	—		—	
3. PLC	± 0.38 [.015]	—		—	
4. PLC	± —	—		—	
ANGLES	± —	—		—	
MATERIAL	FINISH	WEIGHT	—	SIZE	CAGE CODE
3	3	—	—	A1	00779
CUSTOMER DRAWING			SCALE	5:1	SHEET 1 OF 1
			DRAWING NO	1586627	REV